

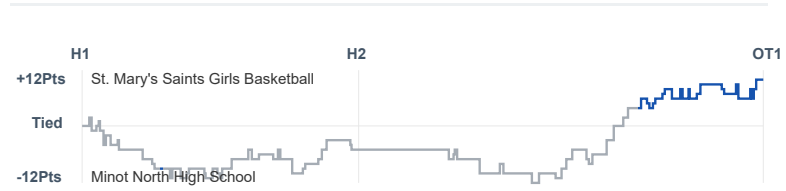
# Box Score Report

SMCHS vs Minot North - Jan 13, 2026 - W 74-64

## Period Stats

Team	1	2	Final
SMCHS	29	45	74
	34	30	64

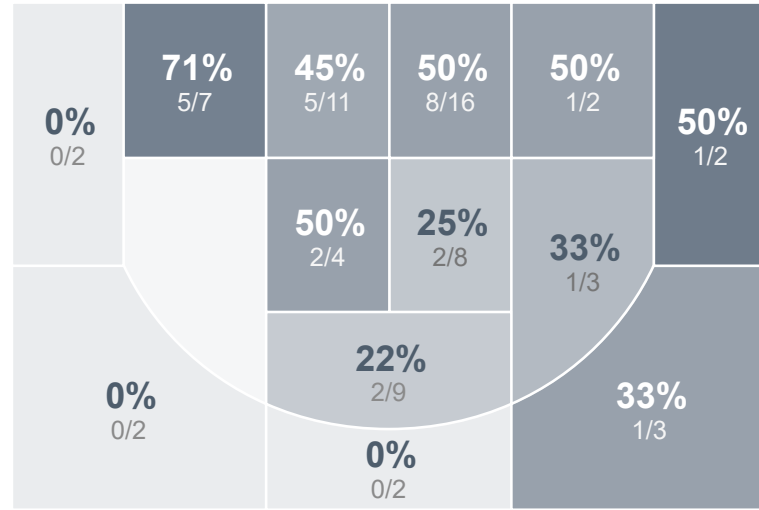
## Run Graph



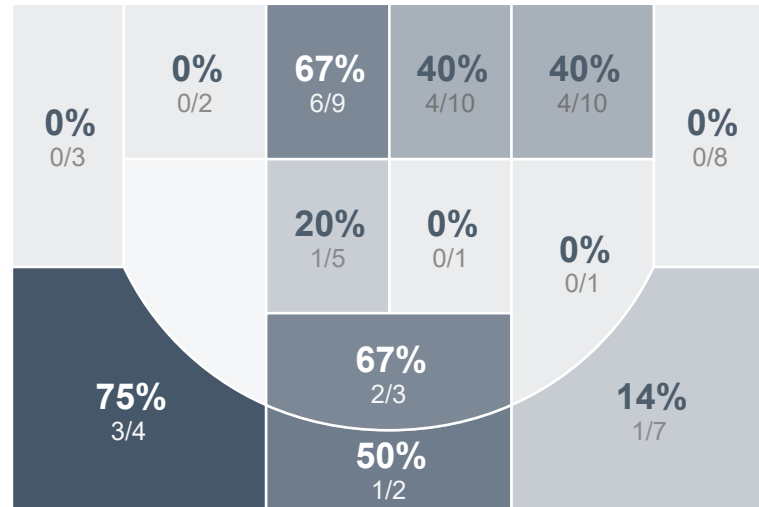
## Team Stats

	SMCHS	
Field Goal %	39.4%	33.8%
Effective Field Goal %	40.8%	37.7%
2FG Made/Attempted	26/60	17/41
2FG%	43.3%	41.5%
3FG Made/Attempted	2/11	5/24
3FG%	18.2%	20.8%
FT Made/Attempted	16/20	15/20
Free Throw Percentage	80.0%	75.0%
Points Per Possession	0.91	0.77
Transition Points	20	9
Points Off Turnovers	24	13
Second Chance Points	14	12
Points in the Paint	34	22
Offensive Rebounds	17	15
Defensive Rebounds	28	25
Assists	14	12
Deflections	14	13
Steals	15	9
Blocks	7	2
Turnovers	18	24
Personal Fouls	14	13
Charges Taken	0	0

## St. Mary's Saints Girls Basketball



## Minot North High School



### St. Mary's Saints Girls Basketball's Player Stats

Name	Pts	FG	3FG	FT	+/-	MINS	OREB	DREB	AST	DEFL	STL	BLK	TO	FOUL	CHG
#1 Mataya Messer	28	12/29	2/7	2/4	+ 10	32	1	11	5	3	4	2	6	5	0
🚩 #2 Unknown Athlete	0	0/0	0/0	0/0	+ 3	3	0	1	0	0	0	0	1	0	0
#4 Stella Gallik	4	2/7	0/1	0/0	+ 7	22	1	1	0	3	2	0	2	1	0
#5 Mya Jones	8	1/6	0/1	6/6	- 3	24	3	0	4	1	1	0	2	2	0
#14 Finley Schmidt	2	1/1	0/0	0/0	- 1	4	0	0	0	1	0	0	0	0	0
#15 Olivia Lundeen	0	0/2	0/0	0/0	+ 1	6	0	0	0	1	1	0	0	1	0
#24 Maggie Kraljic	2	1/3	0/1	0/0	+ 21	25	1	2	3	2	4	1	4	1	0
#25 Journey Oukrop	15	7/11	0/1	1/2	+ 6	31	1	3	1	1	1	0	2	3	0
#30 Lily Edinger	15	4/8	0/0	7/8	+ 12	27	5	6	1	2	1	3	1	0	0
#32 Savannah Schweitzer	0	0/4	0/0	0/0	- 6	14	2	1	0	0	1	1	0	1	0

### Minot North High School's Player Stats

Name	Pts	FG	3FG	FT	+/-	MINS	OREB	DREB	AST	DEFL	STL	BLK	TO	FOUL	CHG
#0 Kaleigh Williams	0	0/0	0/0	0/0	- 4	1	0	0	0	0	0	0	0	0	0
#2 Cambree Phillips	12	5/13	1/3	1/4	- 4	34	2	3	2	2	4	1	5	3	0
#4 Jazlynn Sweet	0	0/0	0/0	0/0	- 1	4	0	0	0	0	0	0	1	0	0
#5 Kinzy Welstad	13	5/12	1/5	2/3	- 10	38	1	0	3	2	2	0	5	3	0
#13 Brynn Francis	0	0/2	0/0	0/0	- 10	38	4	7	3	1	1	0	5	4	0
#23 Sheyenne Bingeman	1	0/6	0/2	1/2	- 10	38	0	2	2	1	1	0	2	2	0
#24 Elli Laskowski	38	12/32	3/14	11/11	- 11	36	5	8	2	7	1	1	5	1	0